

Blackburnian Warbler

Blackburnian Warbler was selected as a representative species for the Designing Sustainable Landscapes project of the North Atlantic LCC (www.umass.edu/landeco/research/dsl/dsl.html). The habitat clusters (ecological systems) and associated wildlife species that it represents generally comprise mature mixed deciduous-coniferous forests. The *Landscape Capability (LC)* index integrates habitat capability, climate suitability and prevalence into a single index that reflects the relative capacity of a site to support the species.



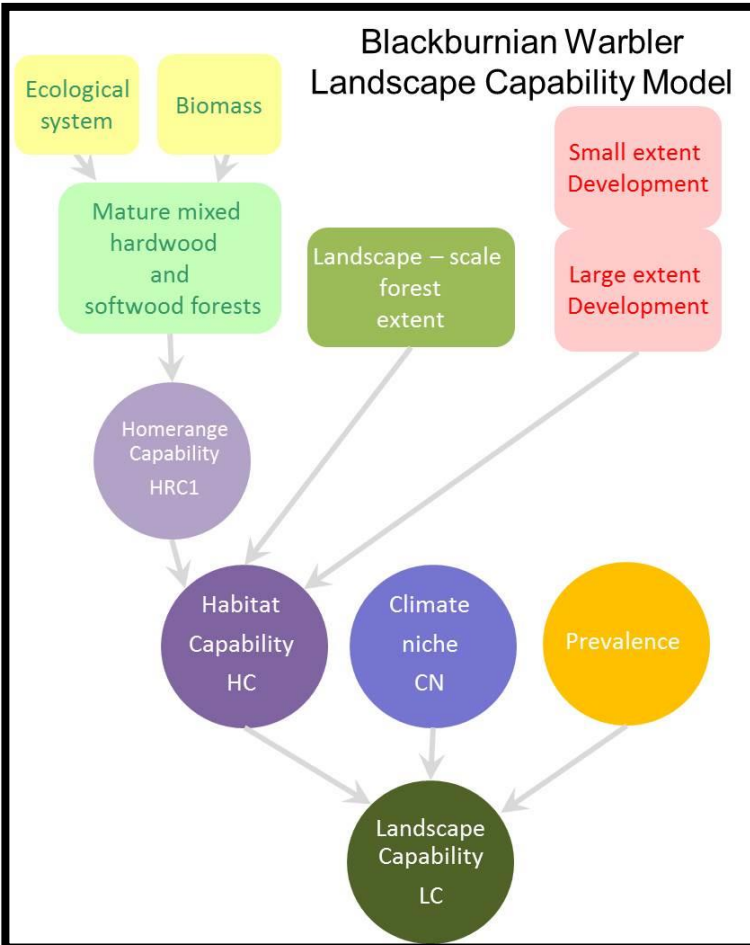
Habitat capability (HC) -- The *HC* index considers five factors representing: (1) ecological system, representing the capability of each system to provide the required invertebrate food and nesting locations needed for breeding, (2) biomass, representing forest structure and development (i.e., seral stage), (3) landscape-scale forest extent, representing the amount of suitable breeding habitat in the landscape surrounding the homerange, (4) small extent development, representing short-distance edge effects such as changes in microclimate, vegetation structure and access by predators that occur on a scale of tens to a few hundred meters from a developed or agricultural edge, and (5) large extent development, representing the effects of human-mediated landscape change that accumulate over a larger geographical area and that may penetrate more deeply into the forest than the processes of local edge effects, such as population increases of cowbirds and generalist predators. The *HC* index represents the relative capacity of a site to provide the habitat needed by the species based on current scientific knowledge.

Climate niche (CN) -- The *CN* index considers three climate variables representing: (1) growing degree days, (2) annual precipitation, and (3) maximum summer temperature and is based on a statistical model derived from 5,522 Breeding Bird Survey (BBS) route segments distributed through the Humid Temperate Domain. The *CN* index represents the probability of the climate being suitable for the species based on its current distribution in relation to current climate.

Prevalence index -- The Prevalence index is based on the proportional presence of the species across space and is derived from the same BBS route segments as above. The prevalence index represents the species' relative probability of occurrence based on its current distribution without consideration of environmental determinants and is intended to address biogeographic factors other than habitat or climate (e.g., disease) that influence the species' current distribution.

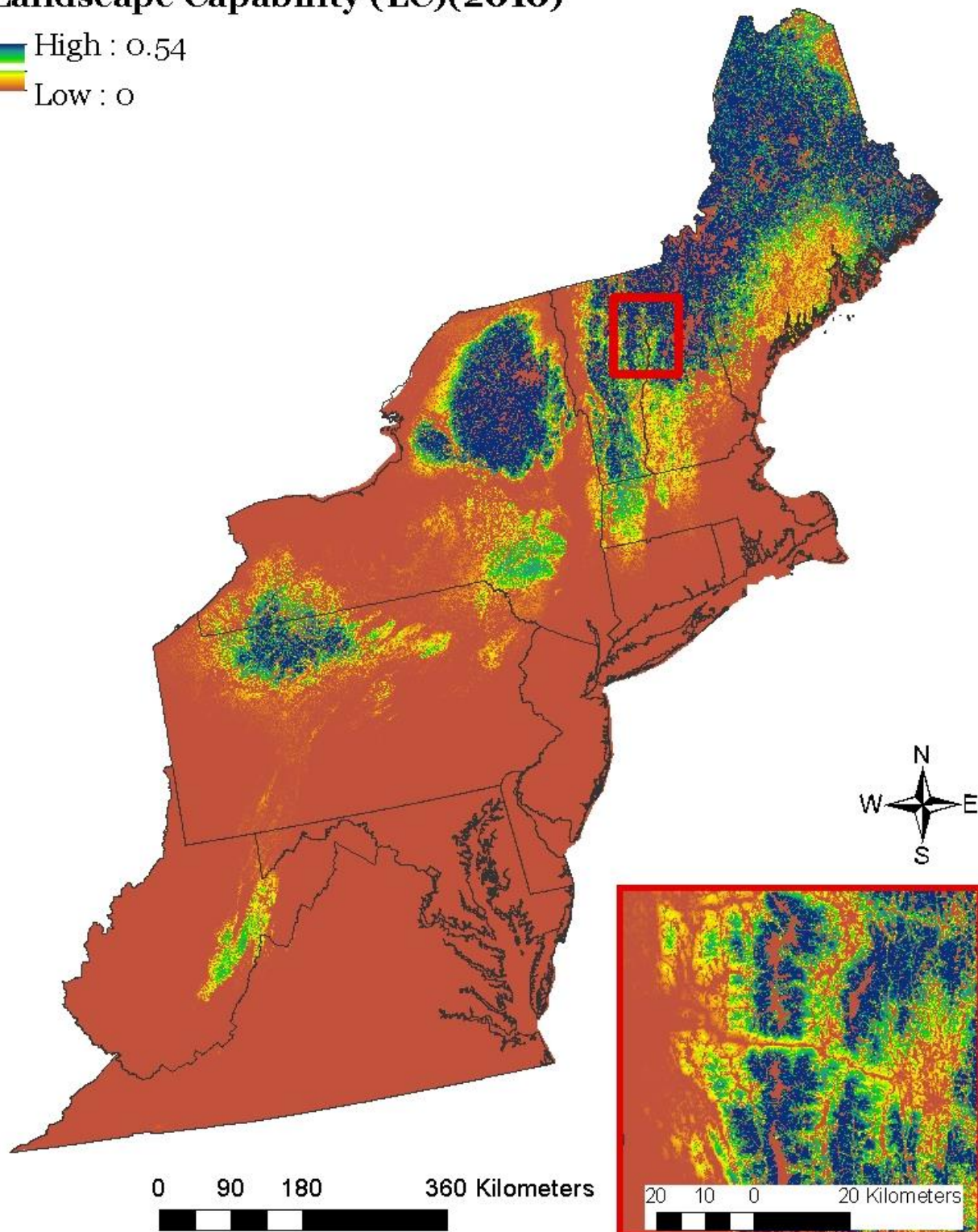
The *LC* index is computed as the product of the *HC*, *CN* and Prevalence indices and is rescaled (0-100) based on the current (2010) landscape conditions (see map). Thus, the index computed

for 2010 reflects the worst (0) to best (100) sites within the landscape that support this species. The index computed for the future (e.g., 2080) reflects the relative value compared to the 2010 standard; thus, values can exceed 100 if conditions improve. Model performance was evaluated using an independent dataset (eBird occurrence data; 2,590 present locations and 5,094 absent locations) and determined to be acceptable (Kappa = 0.72, Deviance explained=51%, AUC = 0.94).



Blackburnian Warbler Landscape Capability (LC)(2010)

High : 0.54
Low : 0



Reference http://jamba.provost.ads.umass.edu/web/lcc/DSL_documentation_species.pdf for a detailed description of the Landscape Capability modeling process.